

YSM's COVID-19 WISHLIST

Fabric masks for adults and children, please see details on second page.

Kits for families with young children:

Diapers, different sizes

Pull ups

Wipes

Baby Formula

Baby Tylenol

Children's Tylenol

Children's cough syrup

Generic toys - balls, colouring book/markers

Food stuffs

Potatoes

Carrots

Mushrooms

Pasta

Pasta sauce

Milk

Dry cereal

Bread

Rice

Dry beans /Lentils

Eggs

condiment (e.g. ketchup, chili flakes, chilli, dried curry)

Hygiene Kits

Laundry soap

Body/bath soap

Hand soap

Feminine Products

Deodorant

Socks

Adult Ibuprofen

Disposable Razors

Toothbrush

Toothpaste

Paper towels

Toilet Paper

Hand Sanitizer

YSM'S CALL FOR FABRIC MASKS

How you can help

Why does YSM need fabric masks?

With the current COVID-19 pandemic there is a worldwide shortage of personal protective equipment, otherwise known as PPE. In order to keep our community healthy and safe, YSM is asking sewers in the community to make masks to be donated to YSM staff and volunteers working to serve and support our community members at this time.

Who are the masks for?

As we begin thinking ahead to when we may reopen our doors to our community members, we must consider the increased need for PPE that will be required. We are once again appealing to the public to help us collect hundreds of masks that will be required to keep our staff and the community we serve protected.

What will I need to make a mask?

We are promoting a simple mask with filter pocket.

Please use clean fabric to make the masks. YSM will also wash all masks before distributing them.

Along with standard sewing supplies (sewing machine, measuring tape, etc.), you will also need:

1. Pre-shrunk **tightly woven 100% cotton**
2. Elastic for ear loops (note: If elastic is not available, cloth ties can be used)

Where do I deliver the sewn masks?

We ask that a minimum of 10 masks be sent in at a time to best manage staff time and exposure. Please put your sewn masks in an envelope with your contact information (name, address, email address and phone number). It would be helpful if you could separate your masks by sizes, for example, women vs men, small vs. large (note, we do not need children's masks at this time).

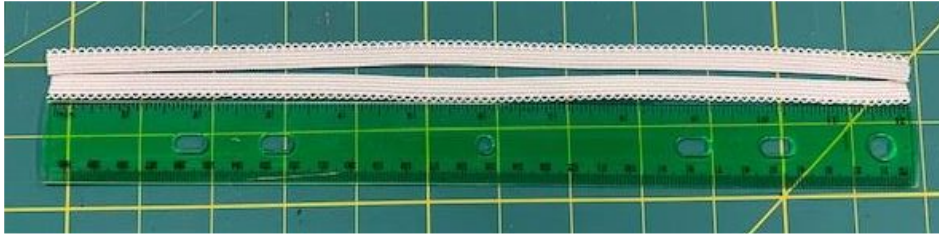
Providing your contact information is optional and will be used by YSM to thank you for responding to our appeal, and for future communications.

The masks can be mailed to:
YSM Evergreen Centre for Street-Involved Youth
c/o Marisa Bannavong
365 Spadina Avenue
Toronto Ontario M5T 2G3

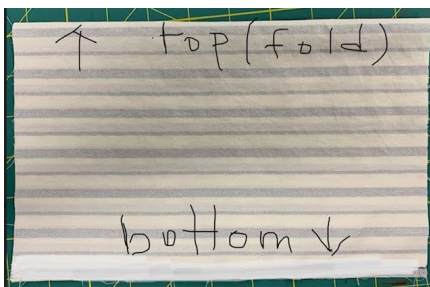
Note: this pattern is for adult sized masks. We are also in need of children's masks, please use the pattern of your choice.

Folded Mask Instructions

1. Cut 2 12" pieces of elastic - set aside.



2. Cut one 10" by 12 ½" rectangle out of 100% preshrunk cotton.
3. Fold the 10" by 12 ½" in half - right side to right side - to make a 10" by 6 ¼" rectangle.

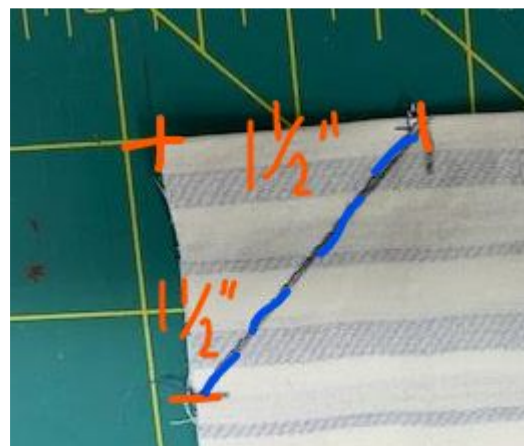


4. Press or smooth flat and draw a line in ¼" from the bottom edge (10" side w/ cut ends)

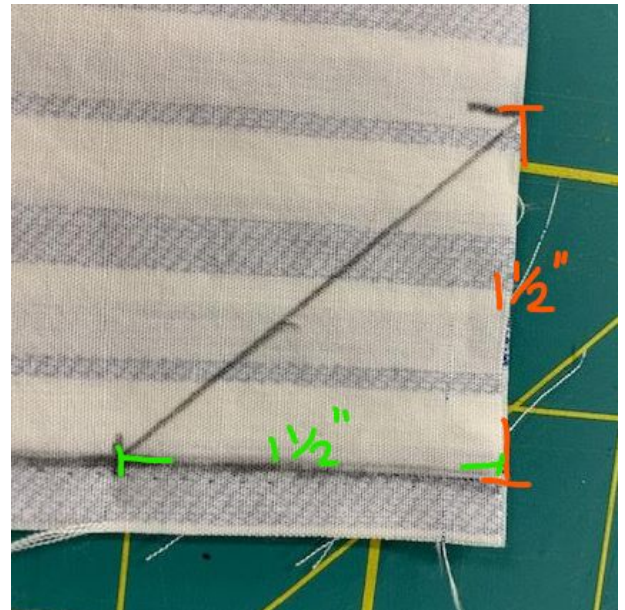


4. At the top left- make a mark on the edge of the fold 1 ½" in from the 6 ¼" end -- make a mark on the edge of the 6 ¼" end that is 1 ½" from the fold.
Draw a diagonal line between the two marks

Repeat at the top right corner.



5. At the bottom corners - do the same but measure 1 1/2" in from the line you drew at 1/4" NOT the raw edge of the fabric-



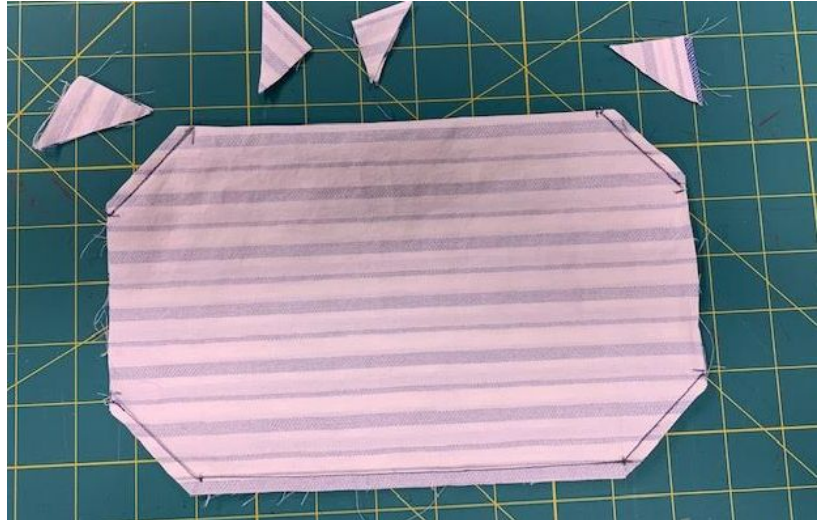
6. Starting at the right side of the bottom
a) sew along the diagonal line



b) Turn 45° and sew 1/4" from the raw edge of the fabric along the line you drew
c) Turn 45° and sew along the 2nd diagonal line finishing at the raw edge

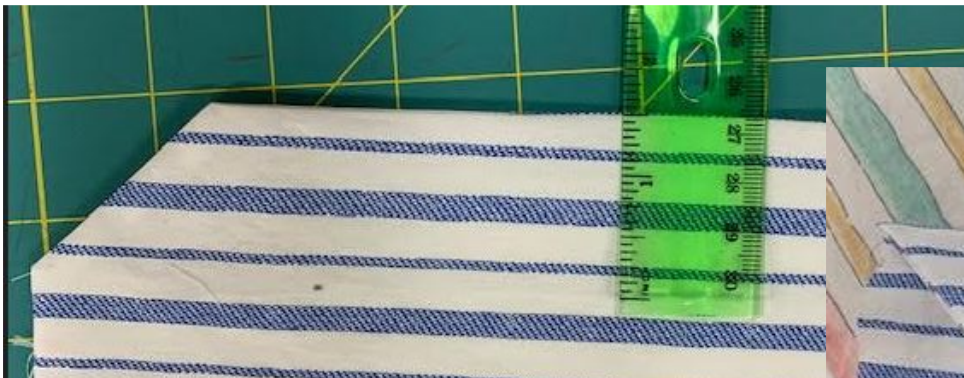
7. Sew along the diagonal lines at the top corners

8. Trim off the corners $\frac{1}{4}$ " from the seam.



9. Turn the mask right side out through one of the open sides - push all corners out fully - press.

10. Fold the bottom and top edges in towards the center $1\frac{1}{2}$ " and press.



You should have a skinny 3" by 10" rectangle.



11. With the folded flaps facing up - fold the narrow ends in $\frac{1}{4}$ " and then $\frac{1}{2}$ " and clip - these will be channels for the ear loops.



12. Starting at the top right corner:

a) Sew down the ear loop channel being sure to leave at least $\frac{1}{4}$ " for the elastic to slide through

b) Turn the corner and topstitch along the bottom fold about $\frac{1}{16}$ " from the edge

c) Stop just onto the edge of the ear loop channel - turn and sew - leaving at least $\frac{1}{4}$ " for the elastic to thread through

d) At the top - turn the corner and topstitch along the top fold about $\frac{1}{16}$ " from the edge.

e) Finish where you started -- be careful not to sew too far and close off the channel for the ear loop elastic

13. Place the mask so that the side with the angled edge flaps is facing you and fold the flaps out - pulling the top flap towards the top edge and the bottom flap towards the bottom edge.

14. Pull the angled edge on the left side of the top flap over so that it is parallel to the ear loop channel stitching. This will pull the top edge of the mask into a curve. Clip or pin it in place.



15. Do the same with the angled edge on the right side of the top flap and then do the bottom angled edges.

16. Sew a line of stitching to hold these edges in place. The stitching should be about $\frac{1}{4}$ " to $\frac{1}{2}$ " from the stitching of the ear loop channel.



17. Thread one elastic through each ear loop channel and tie loosely

